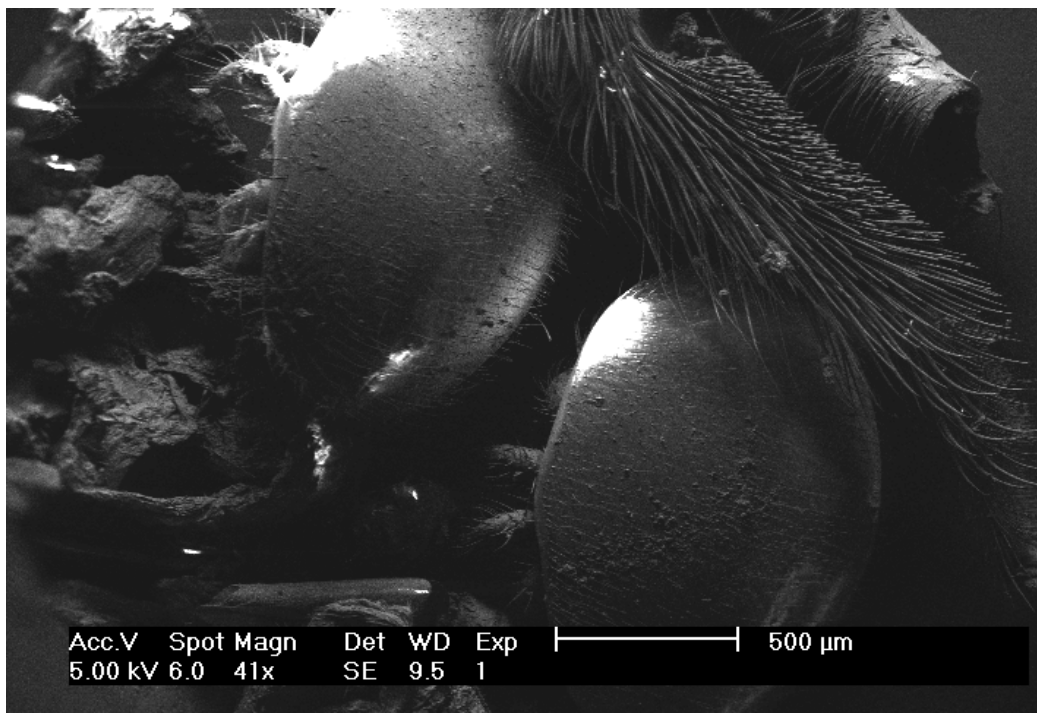
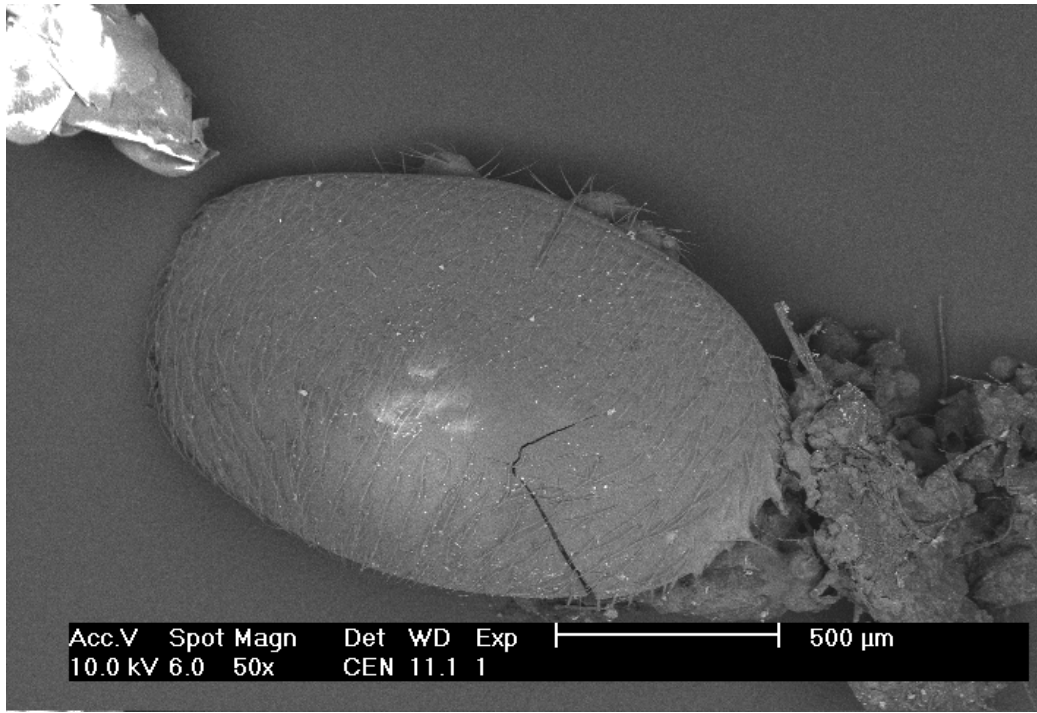
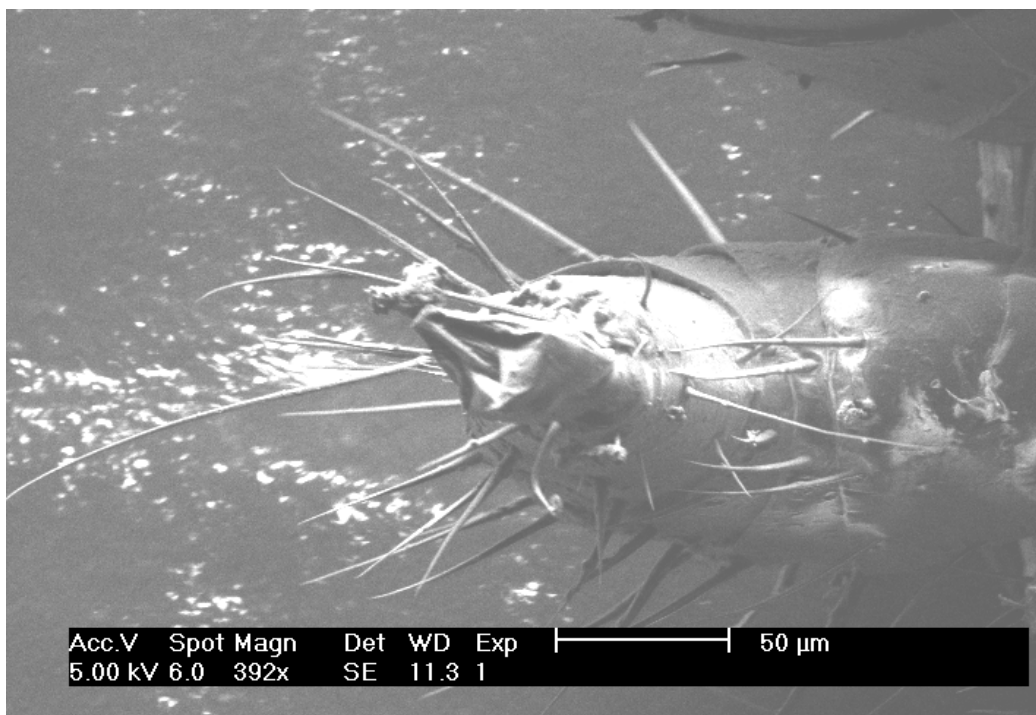
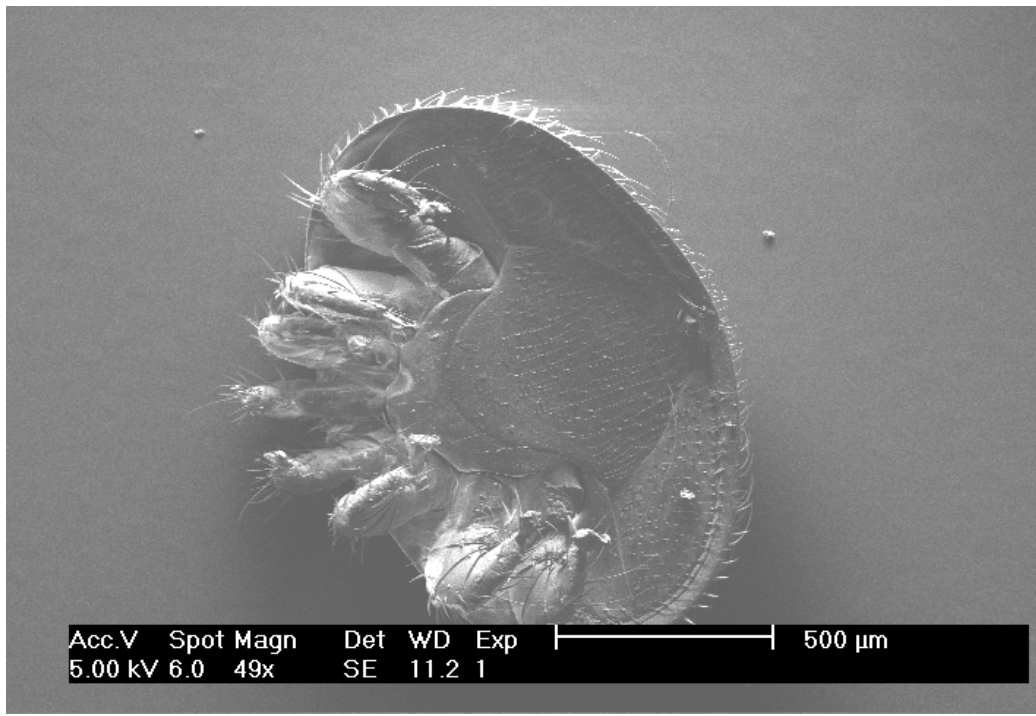
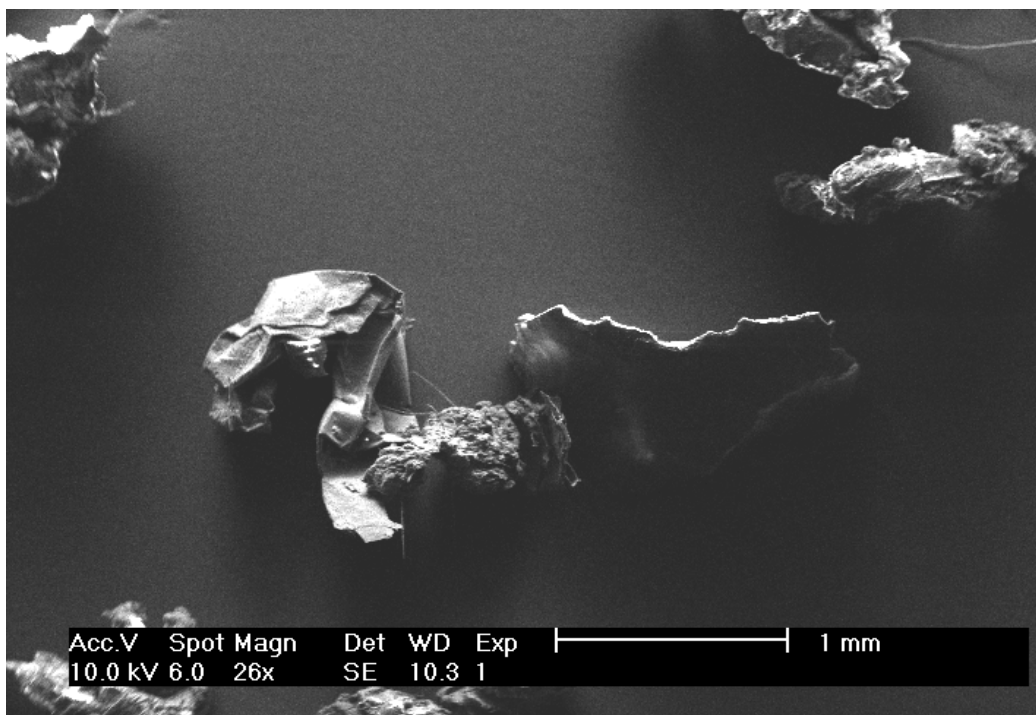
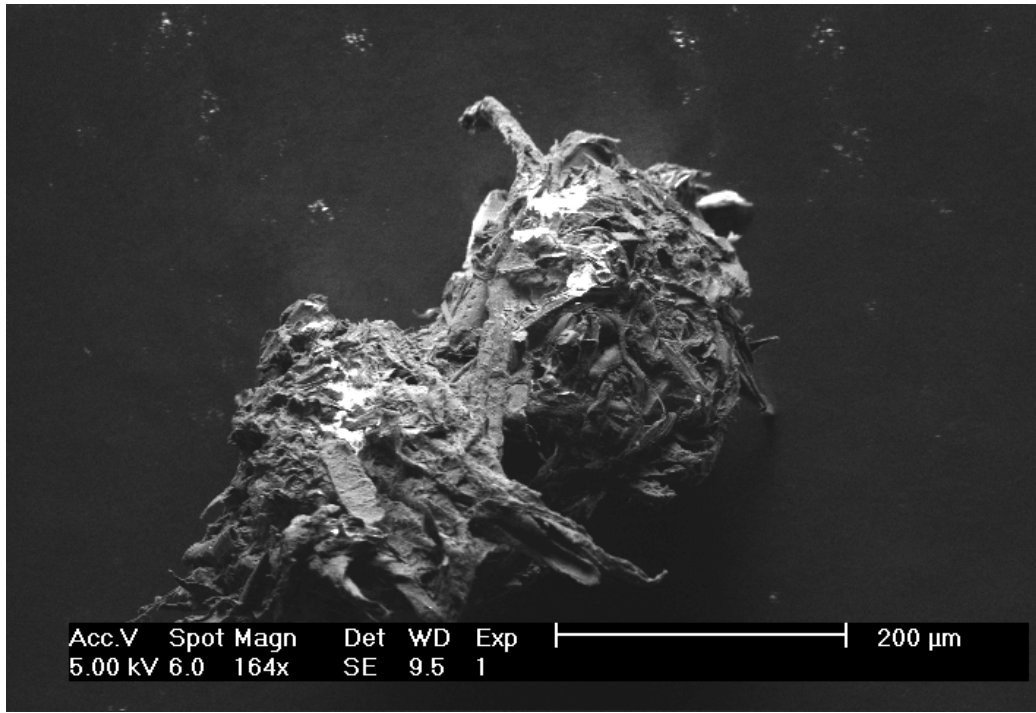


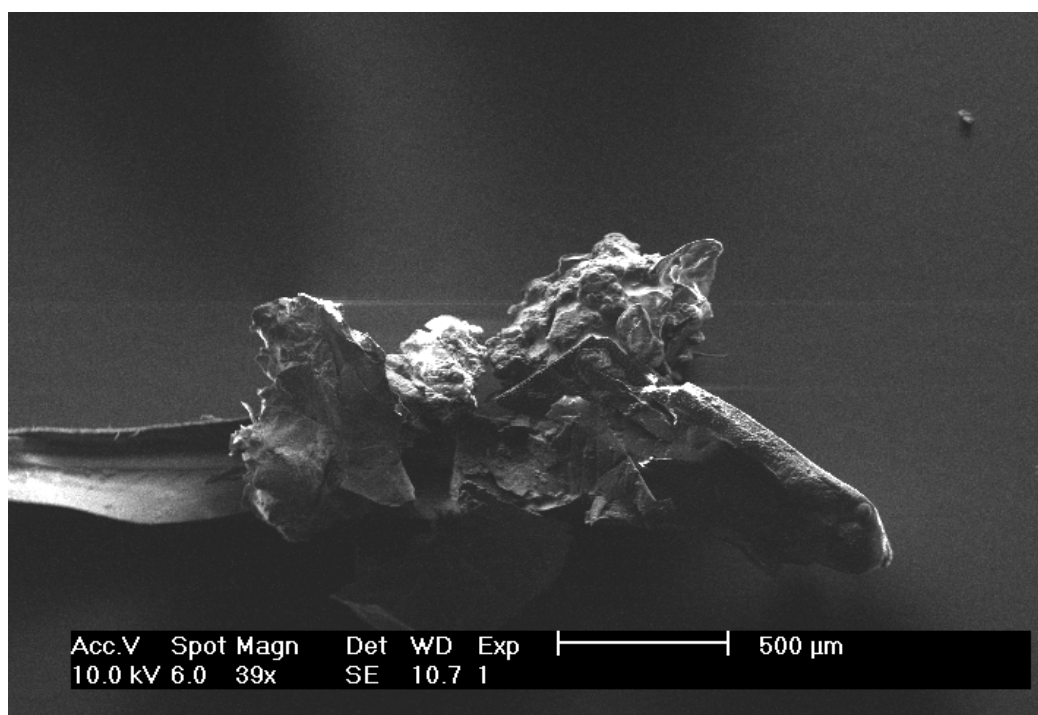
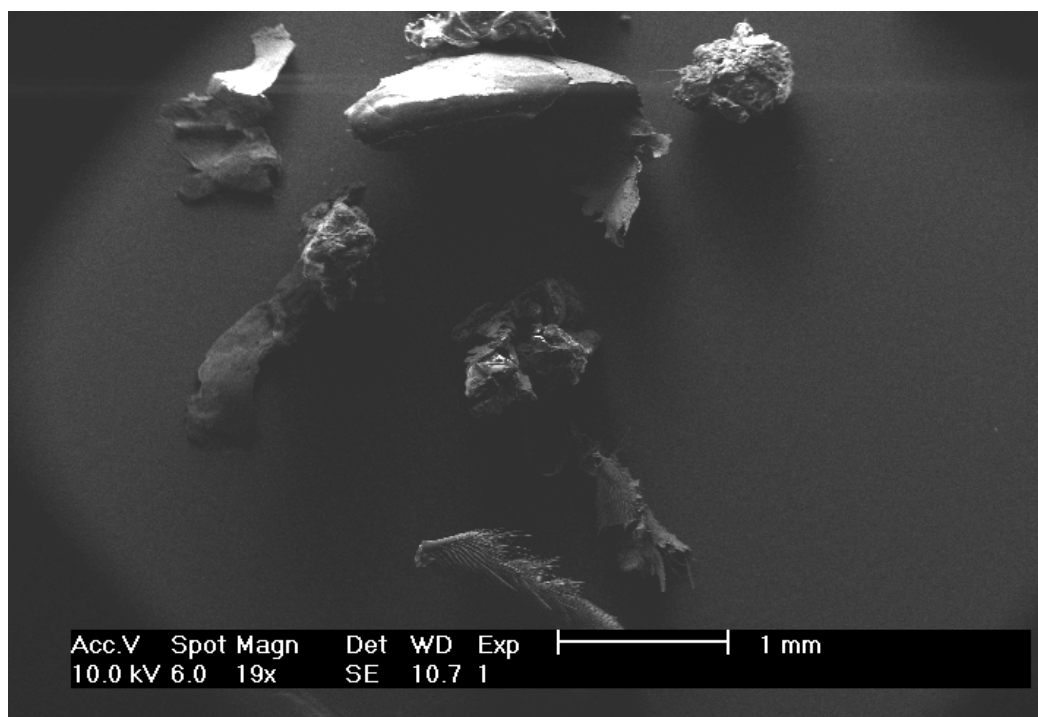
Varroa mites

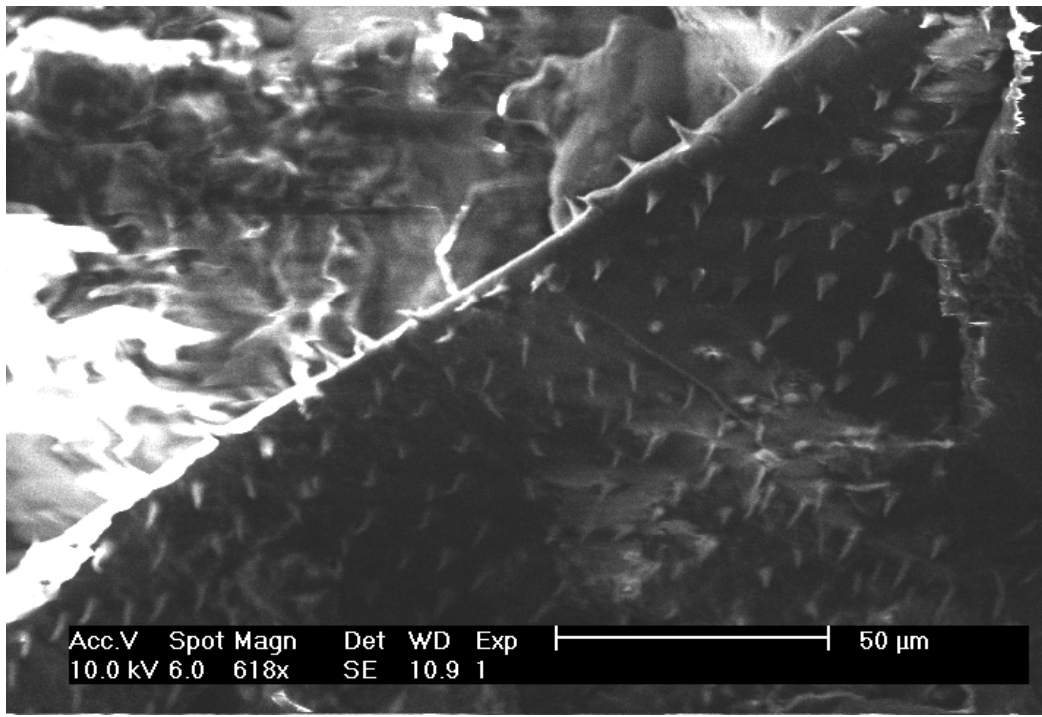
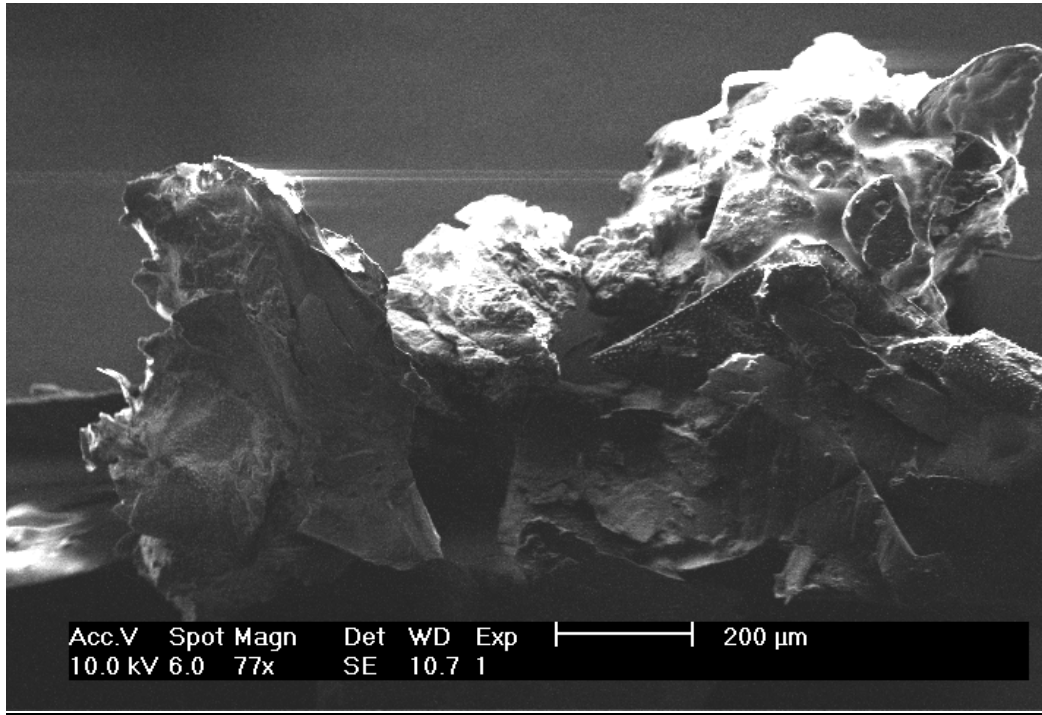


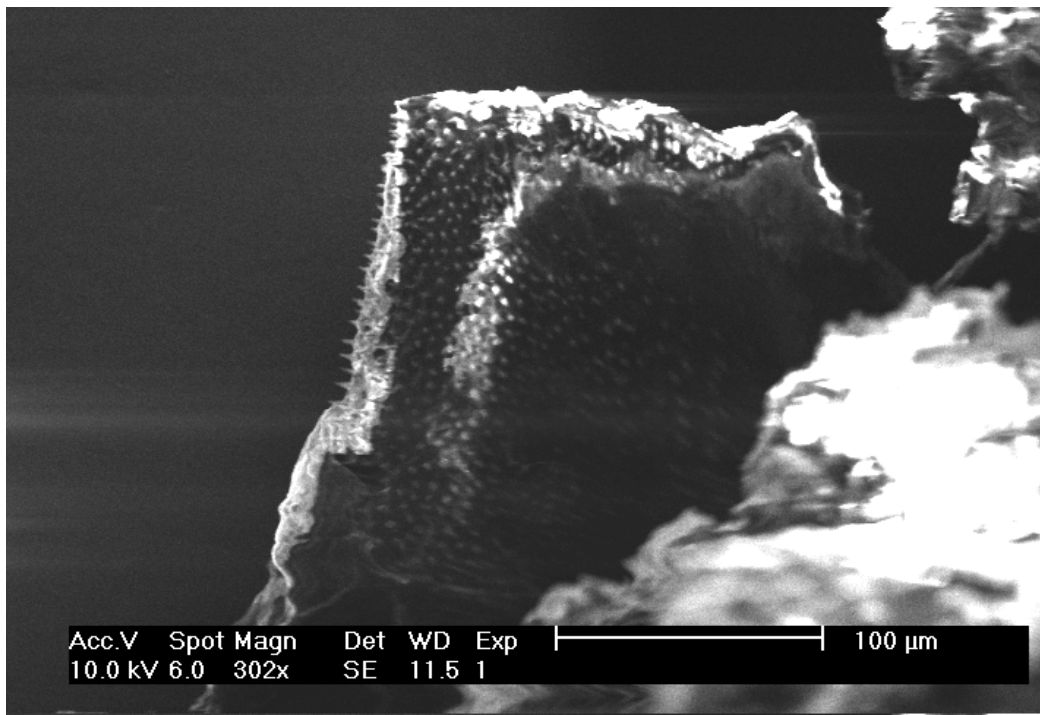
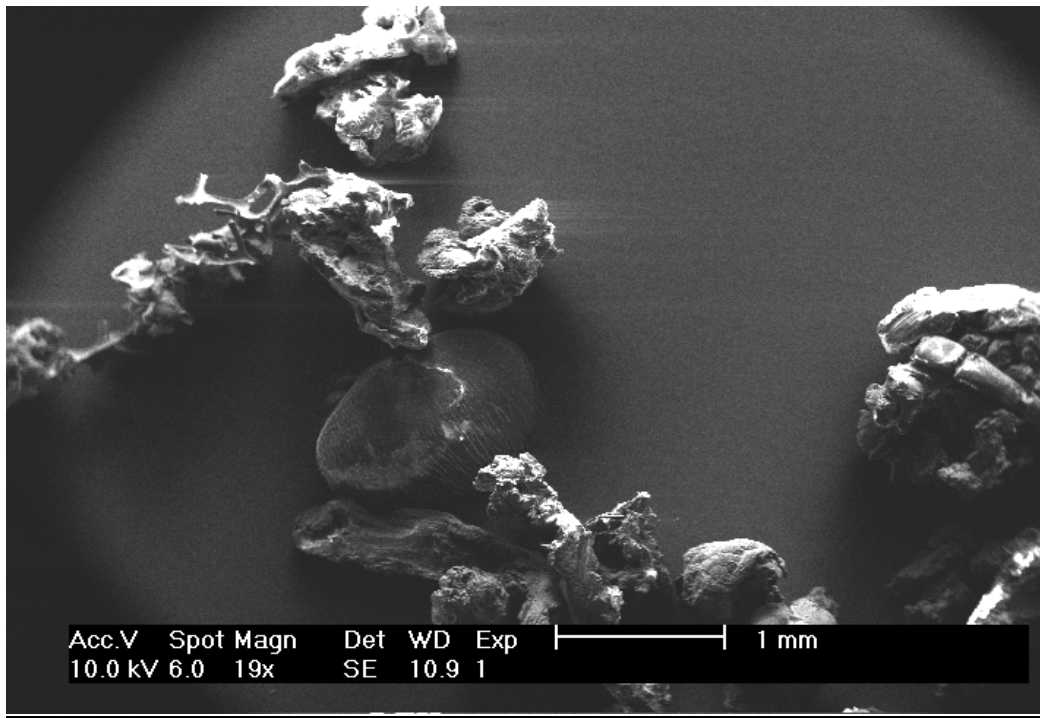


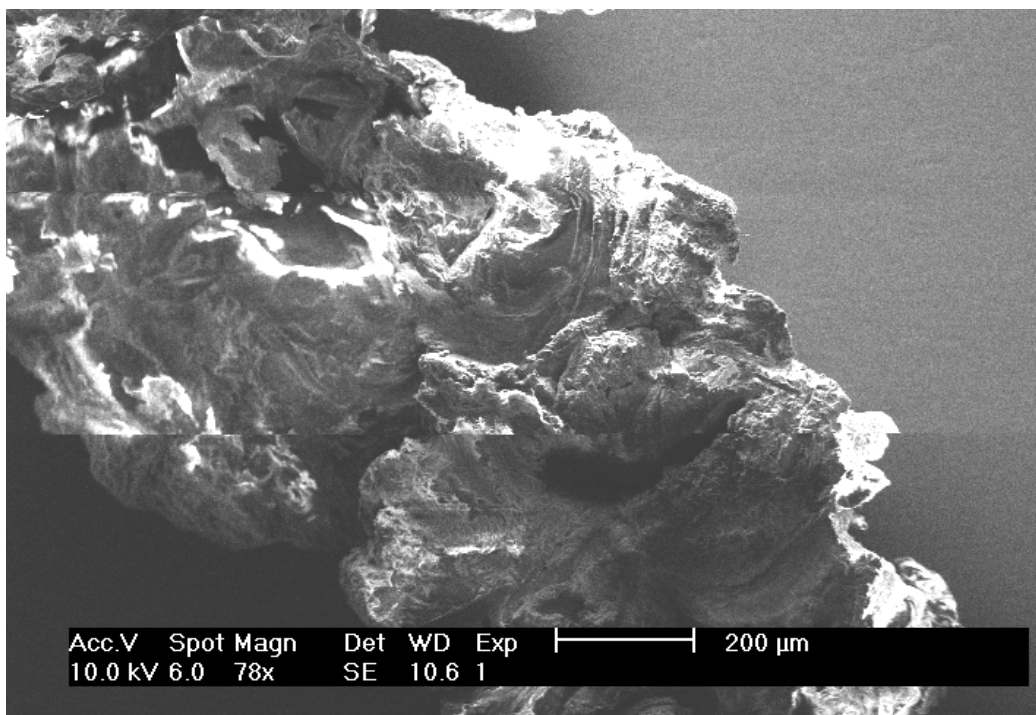
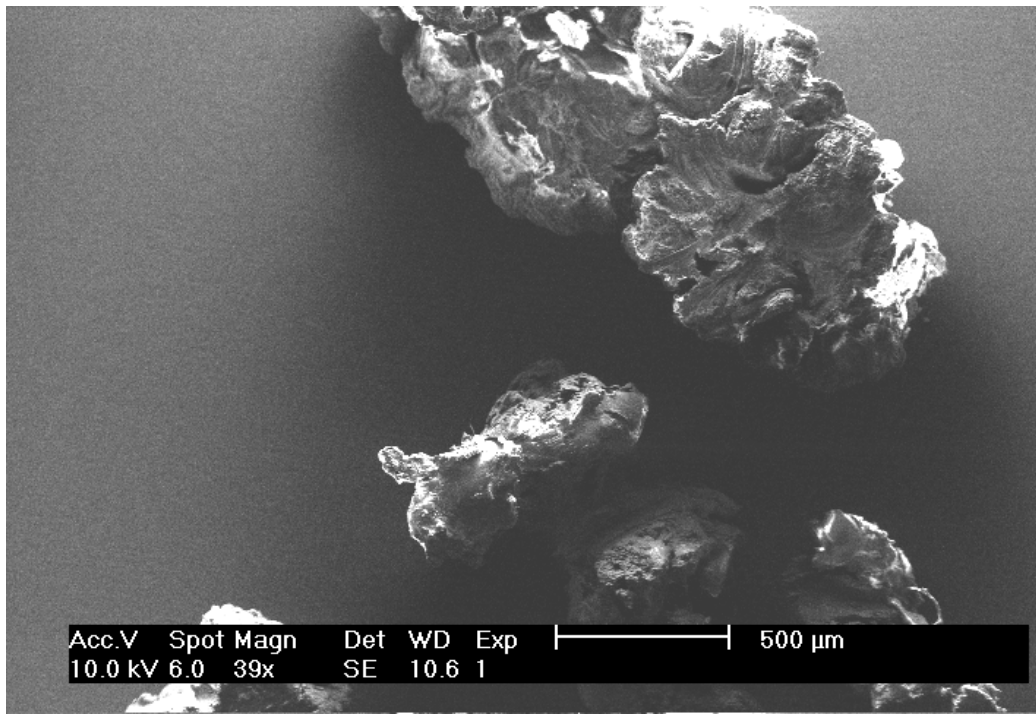
Hive debris

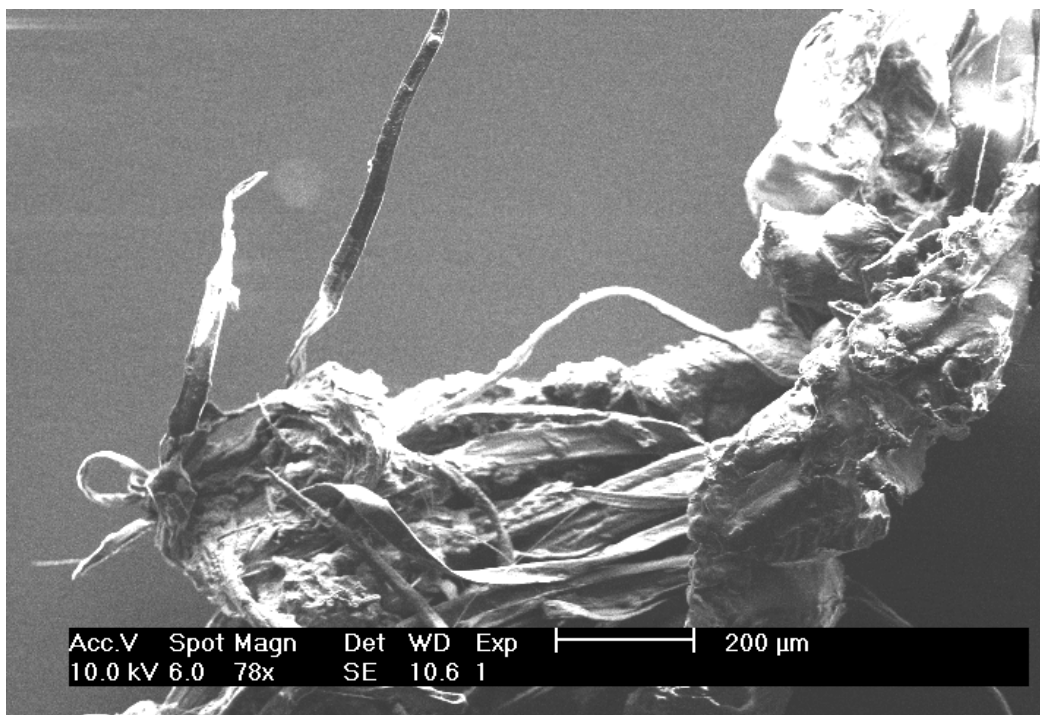
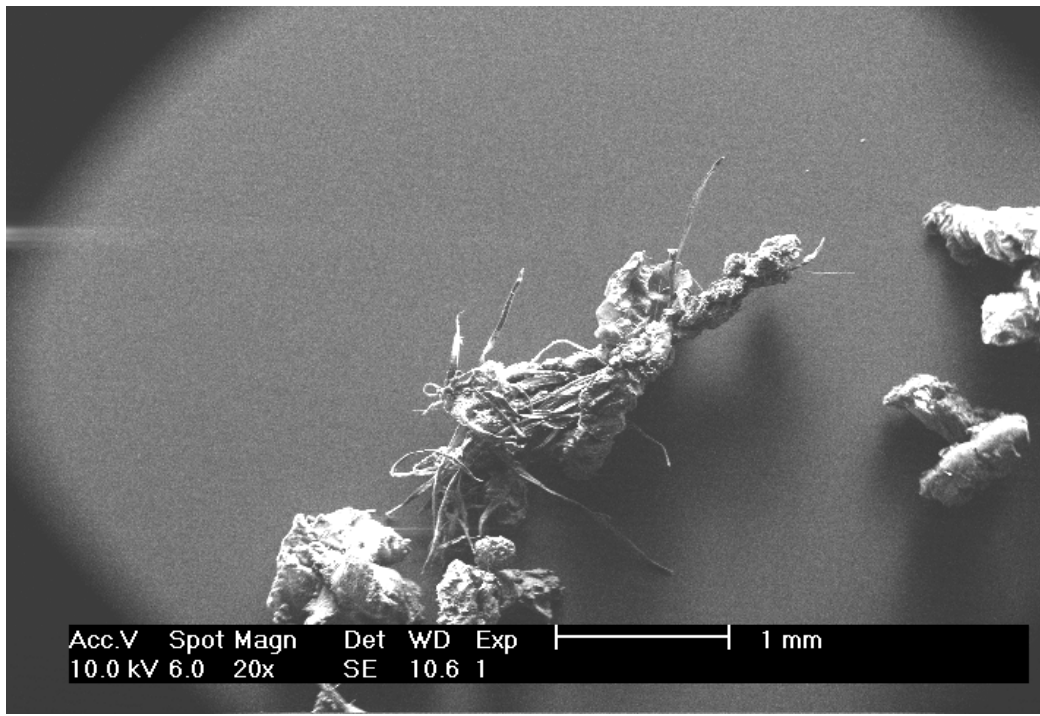




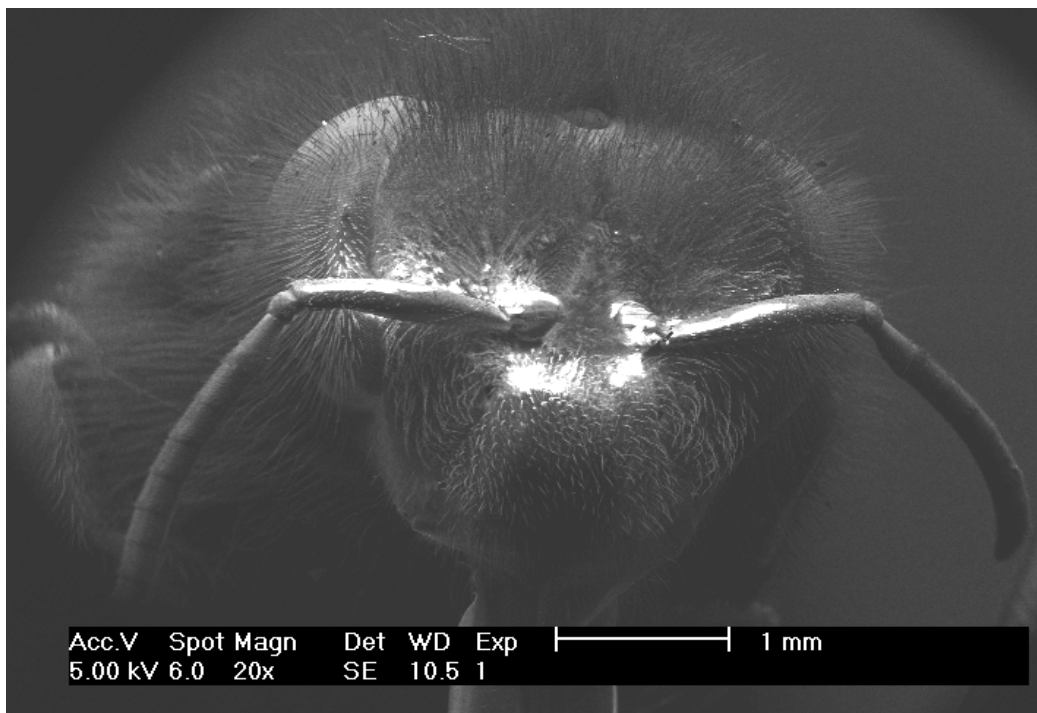
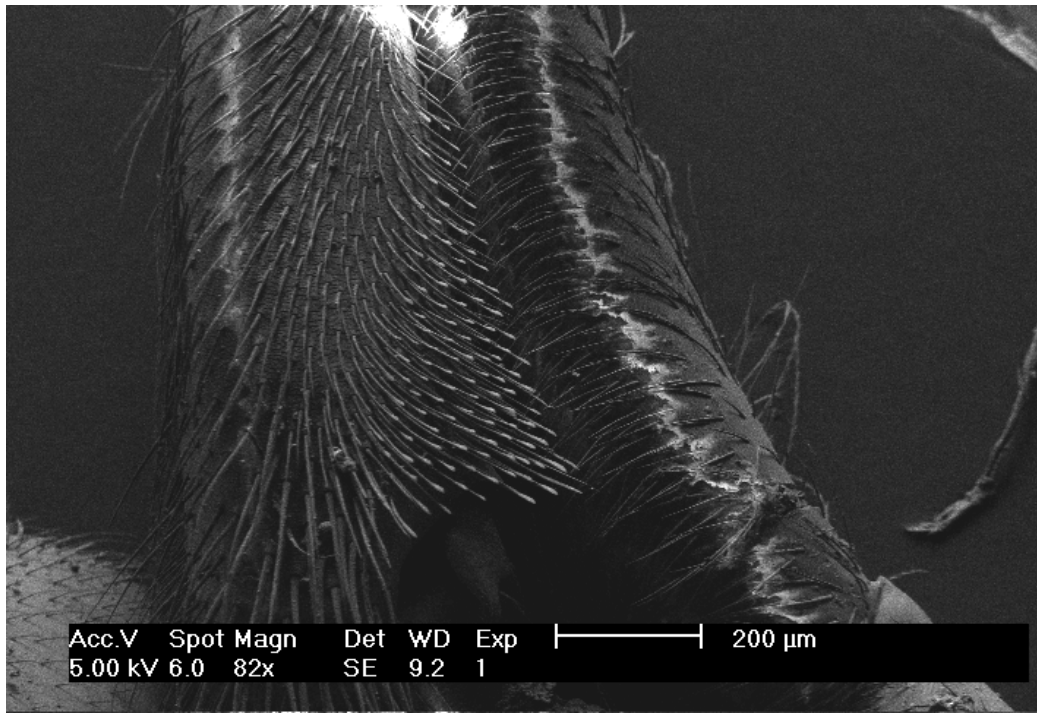


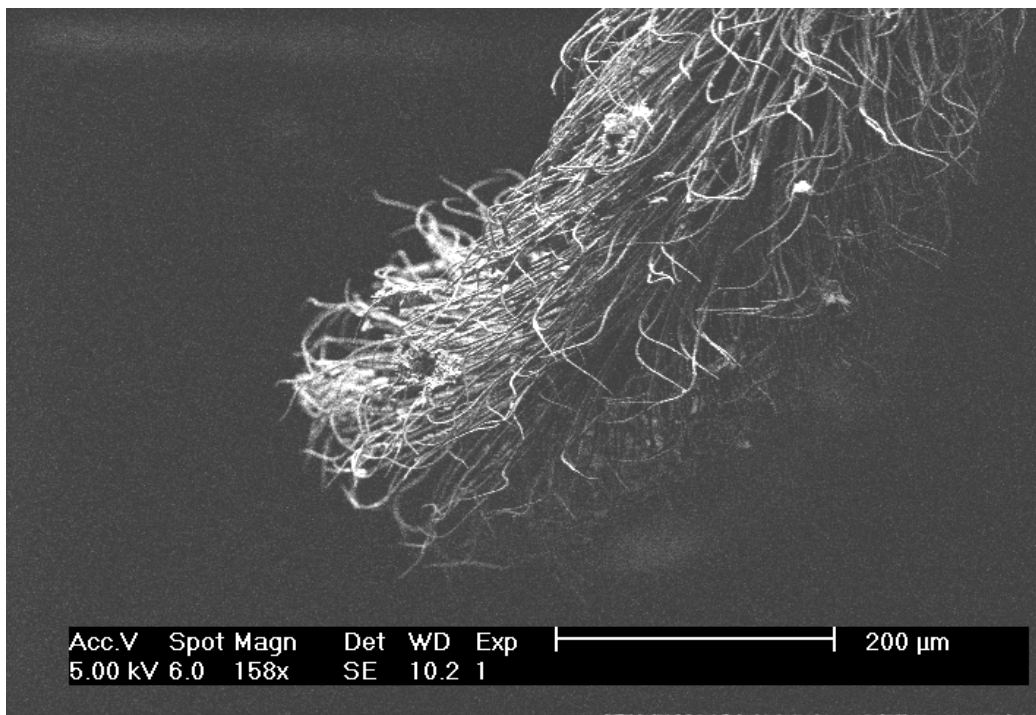
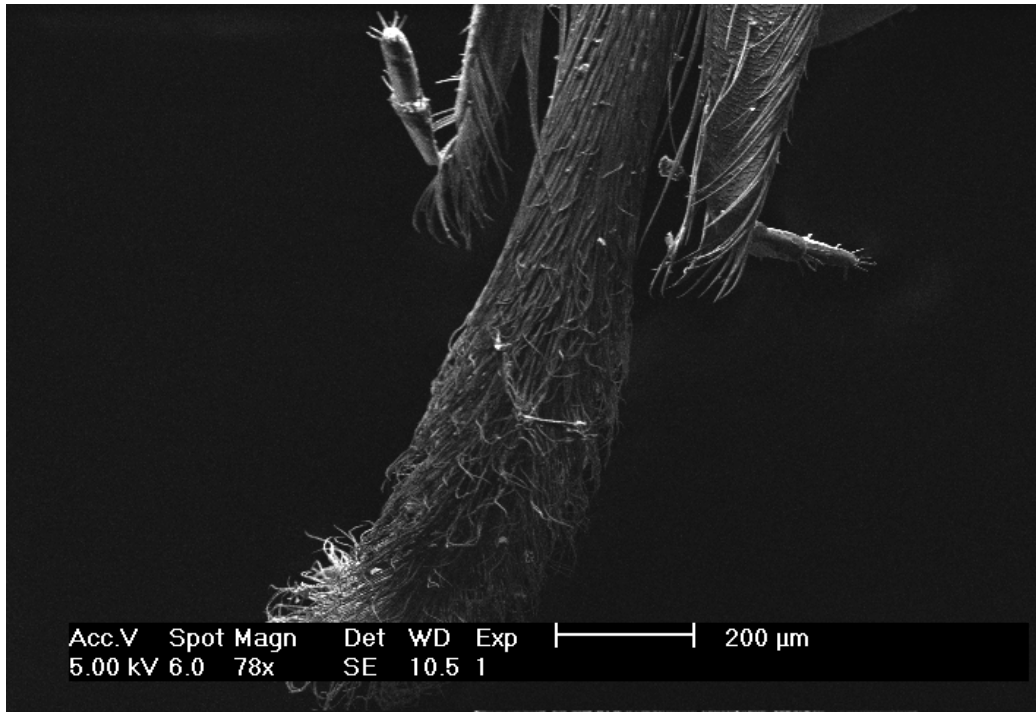


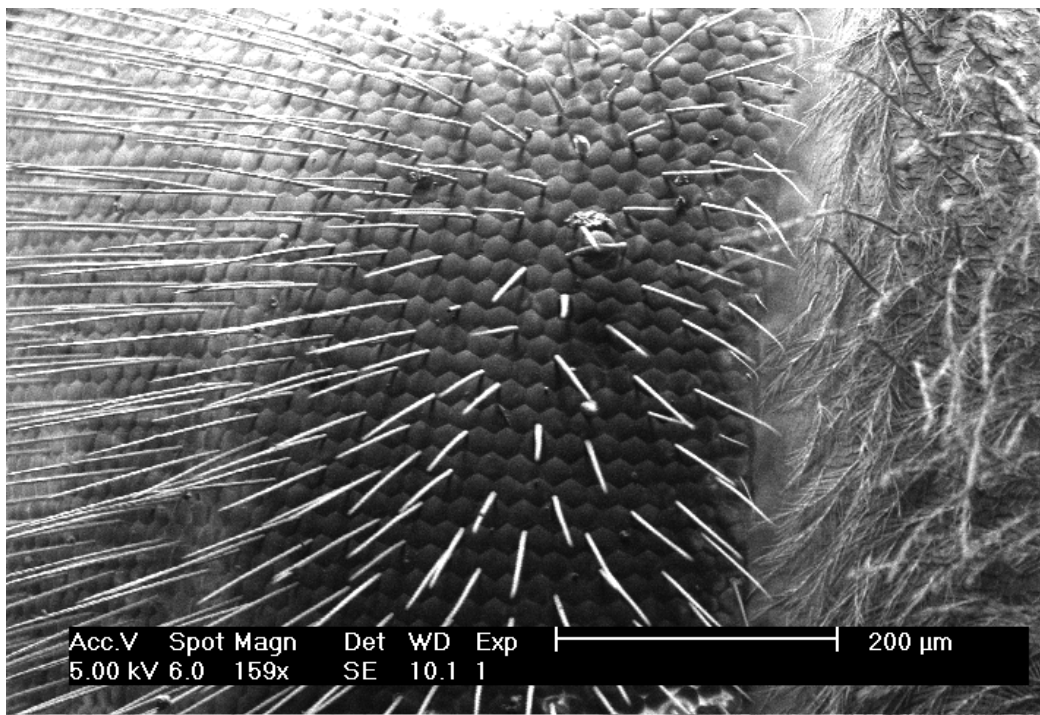
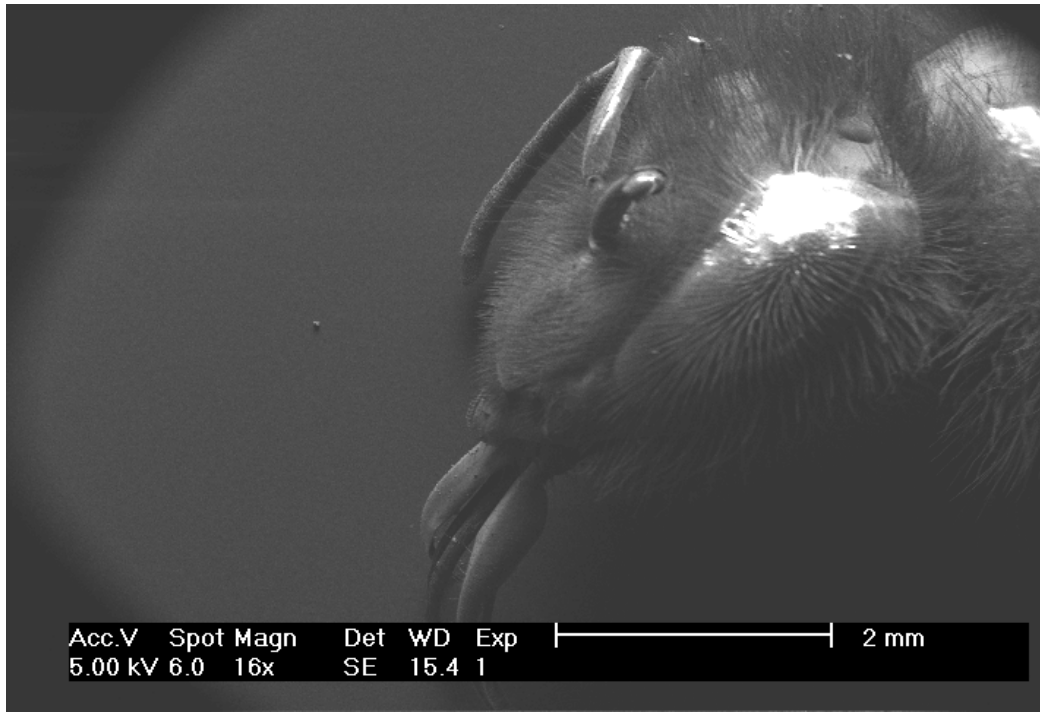


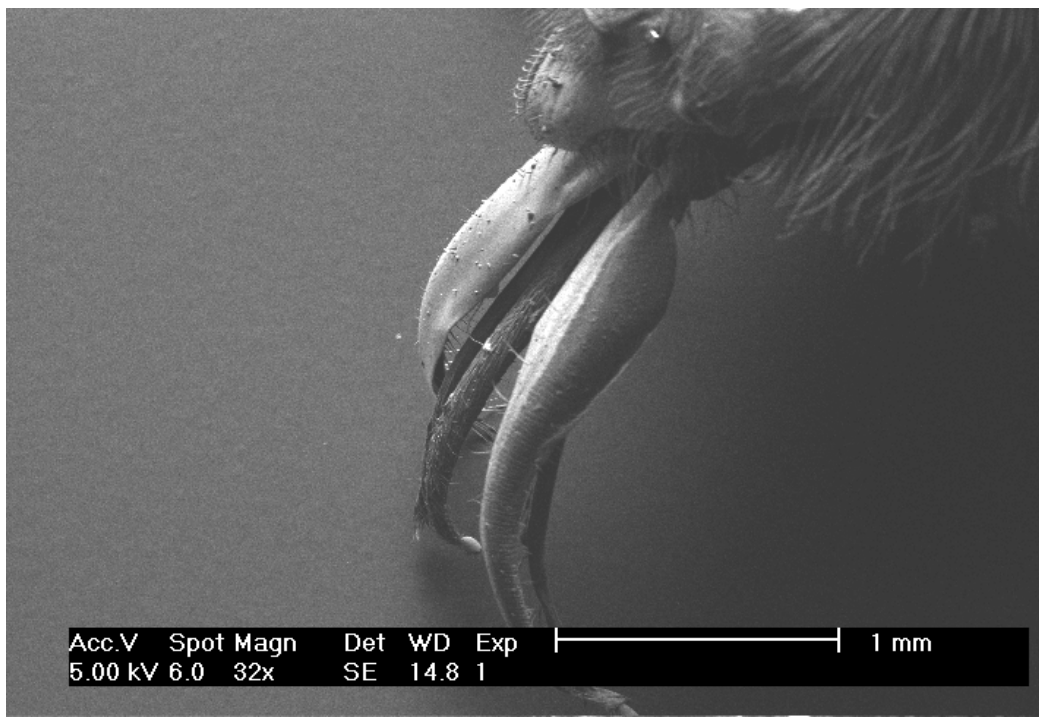
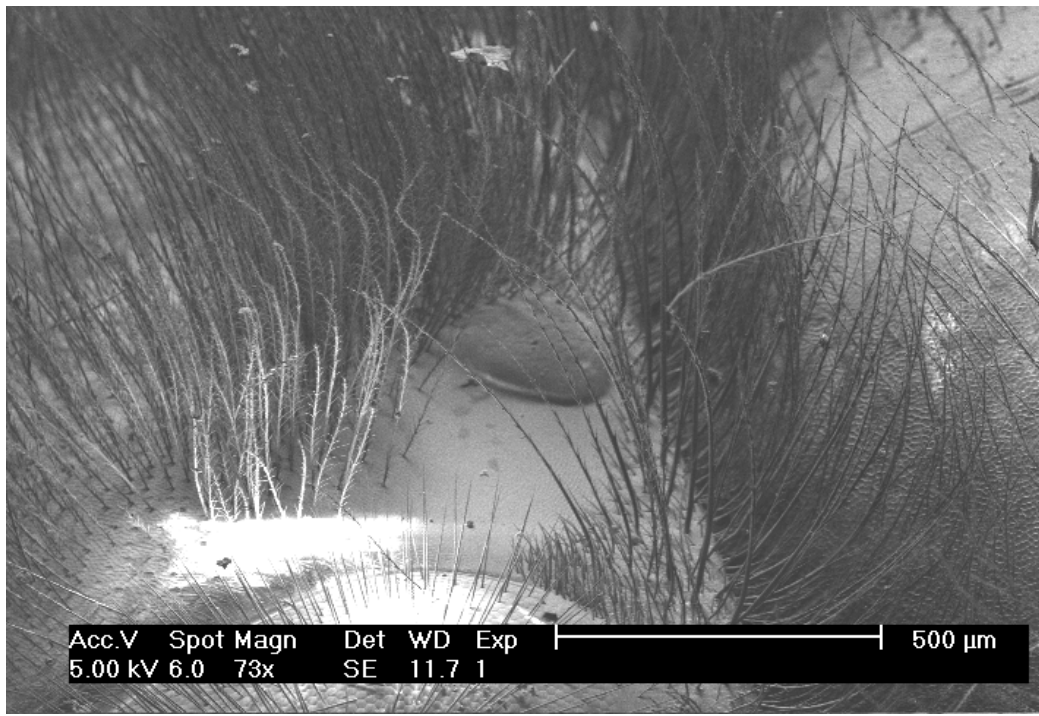


Bee body parts

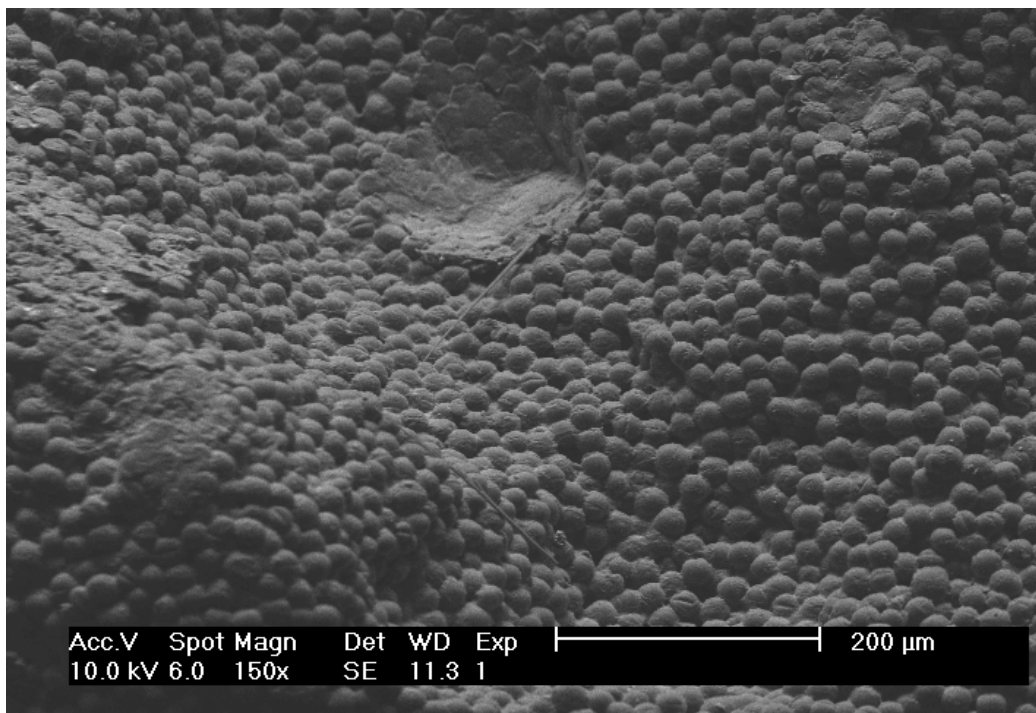
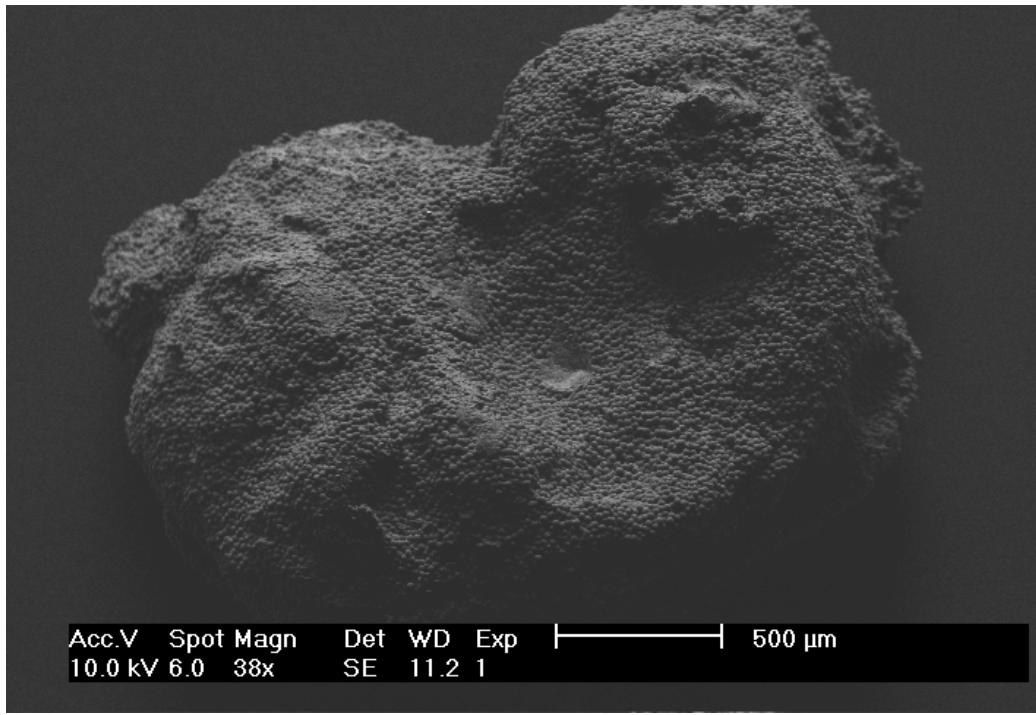


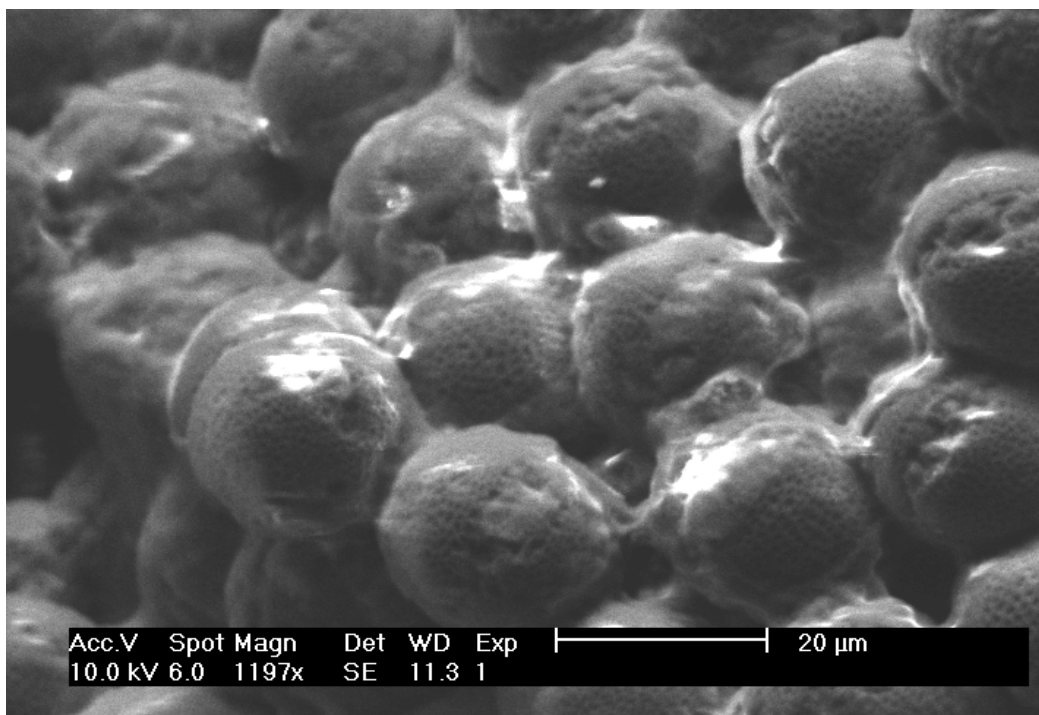
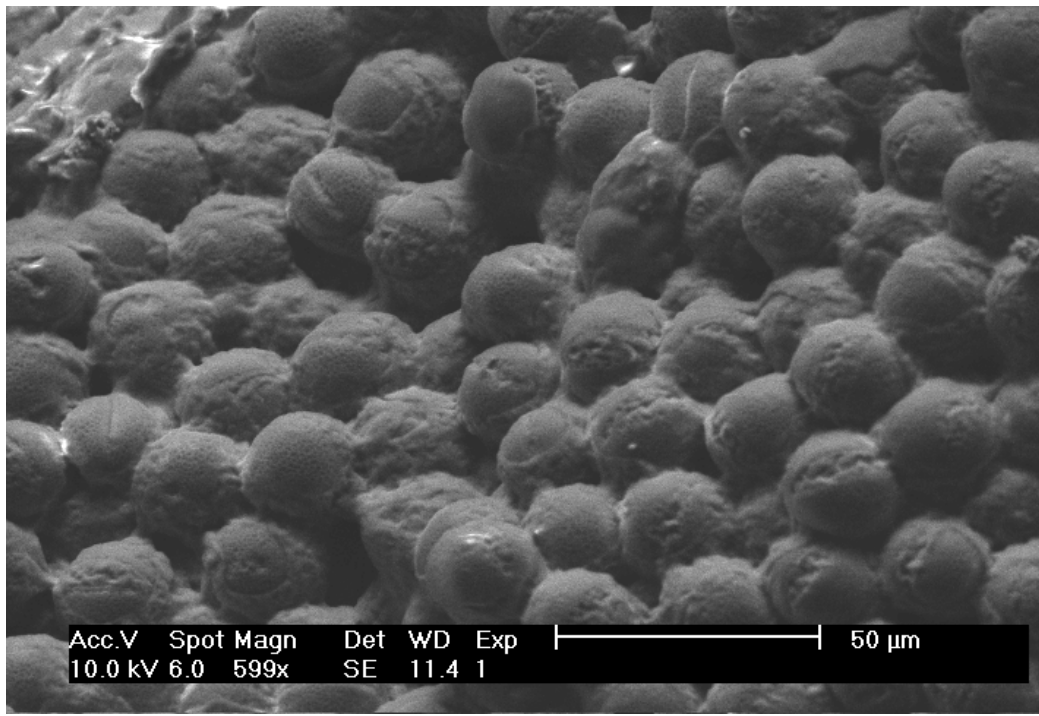


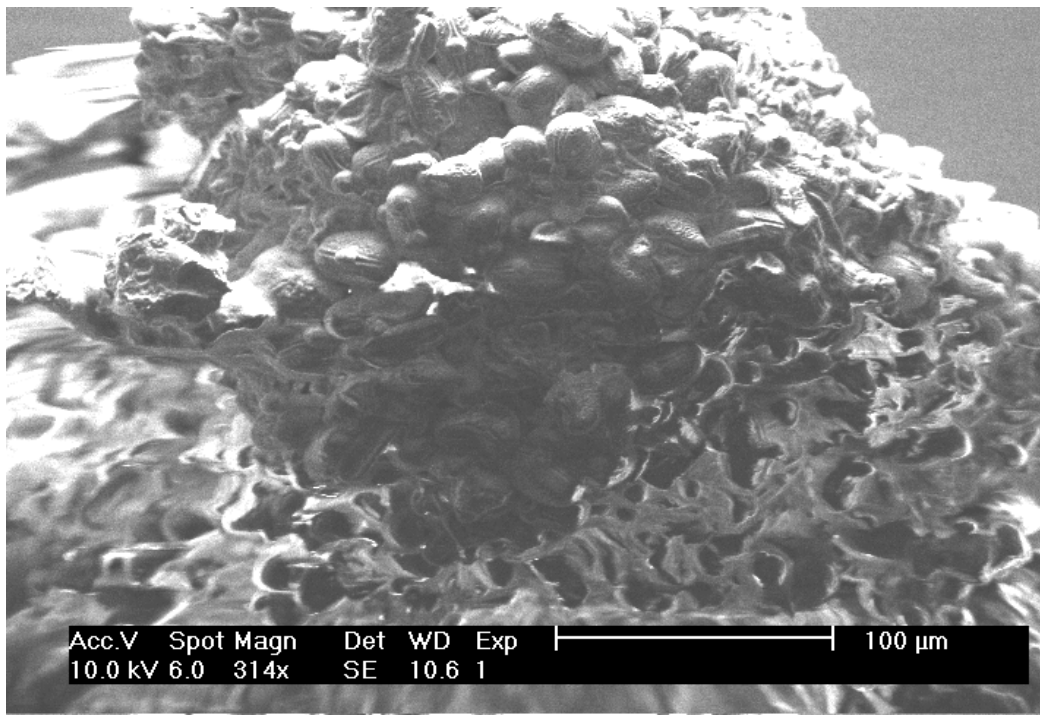
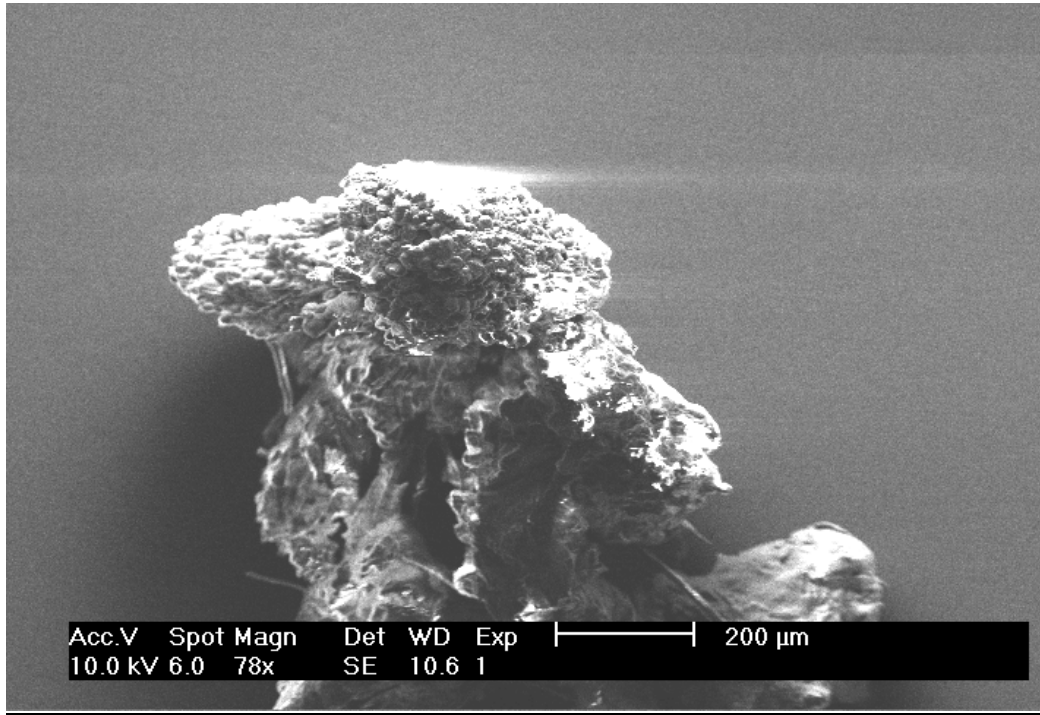


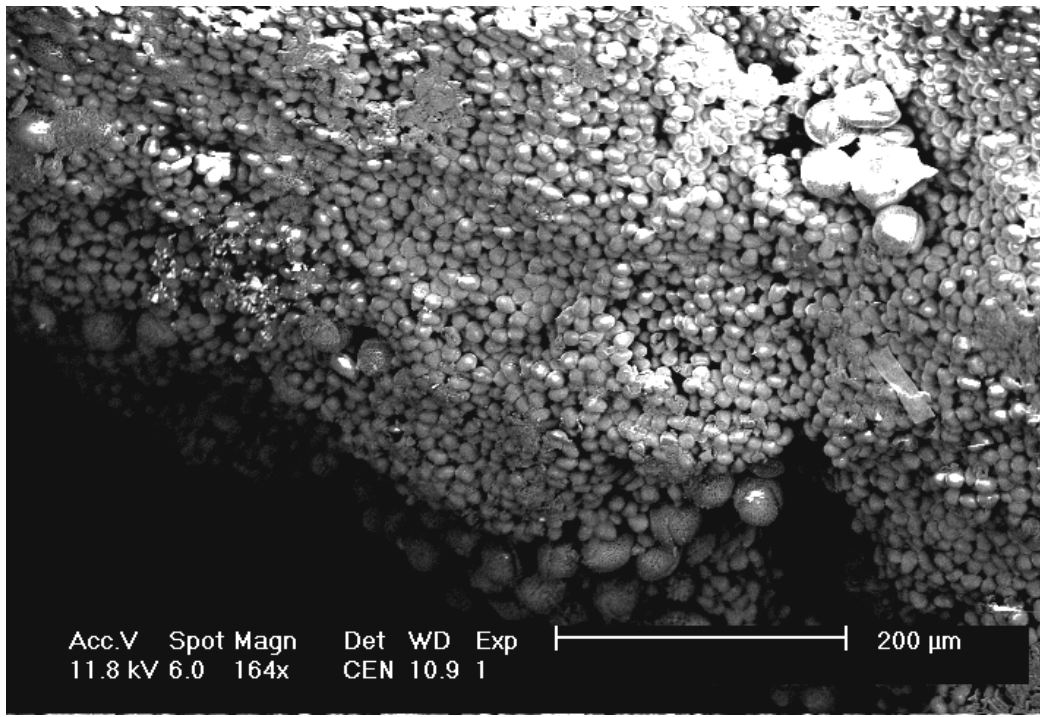
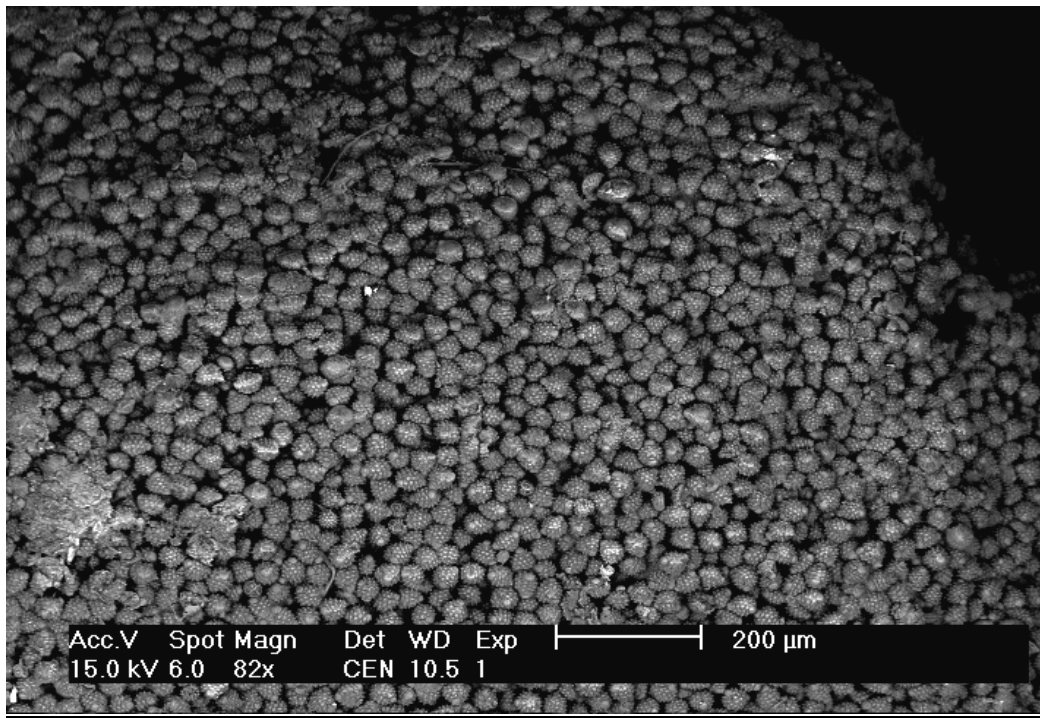


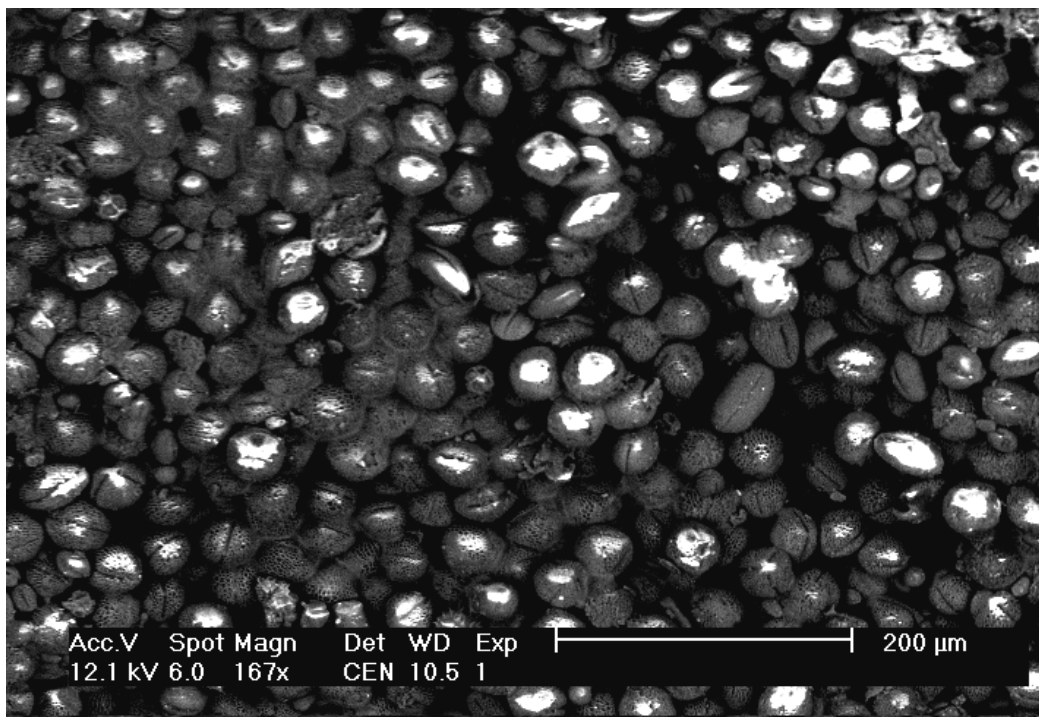
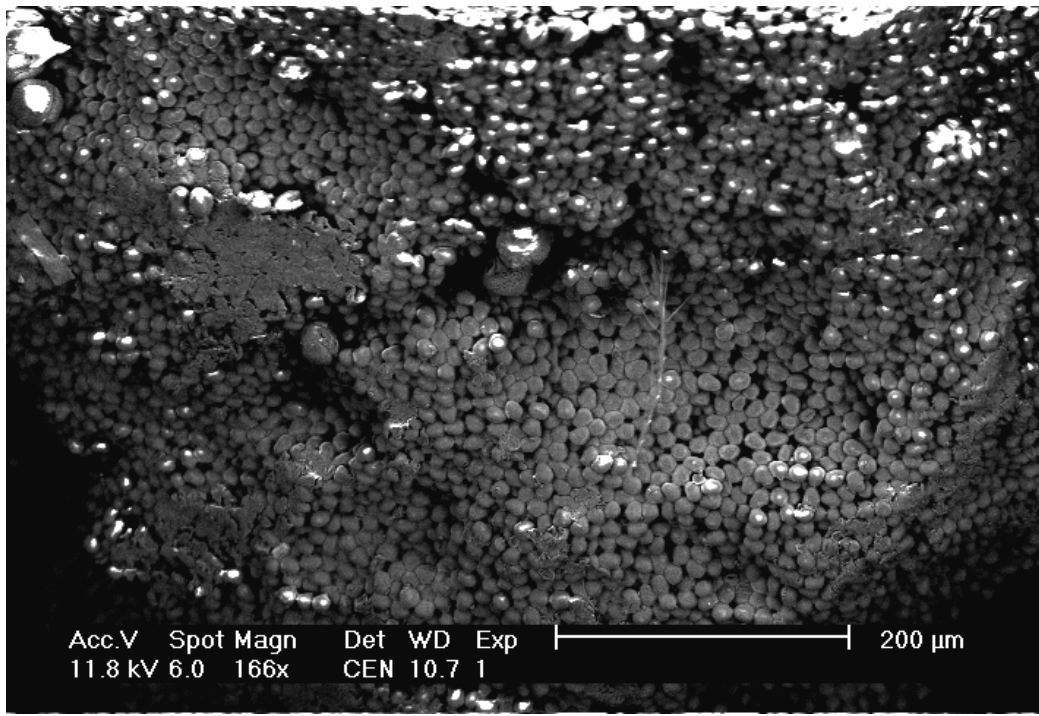
Pollen grains

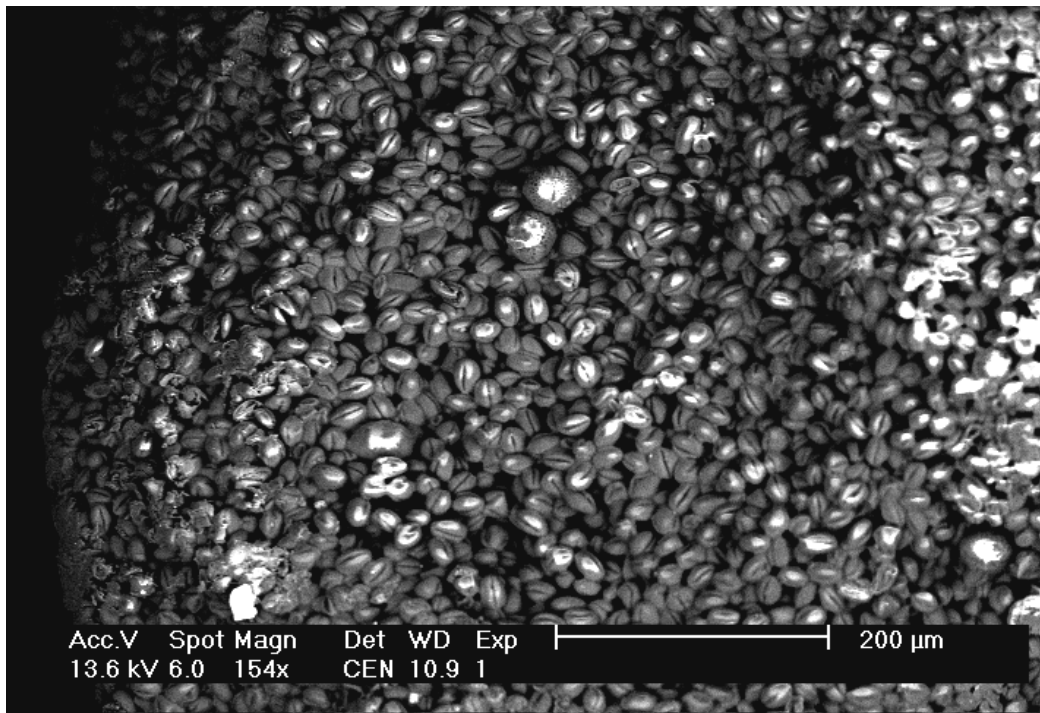
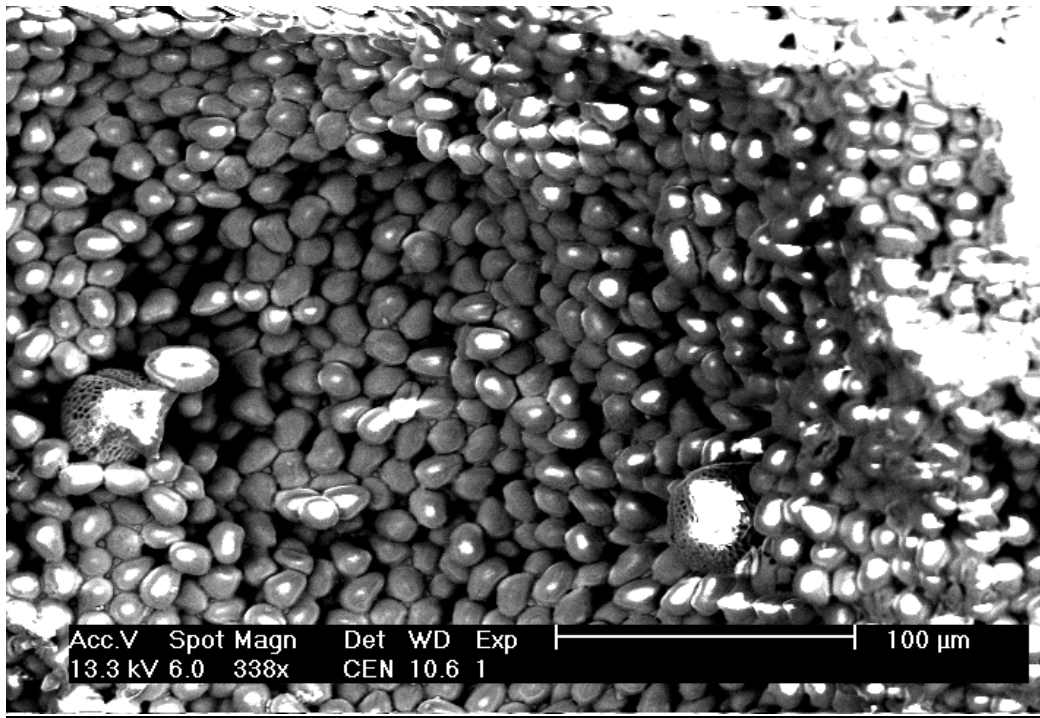


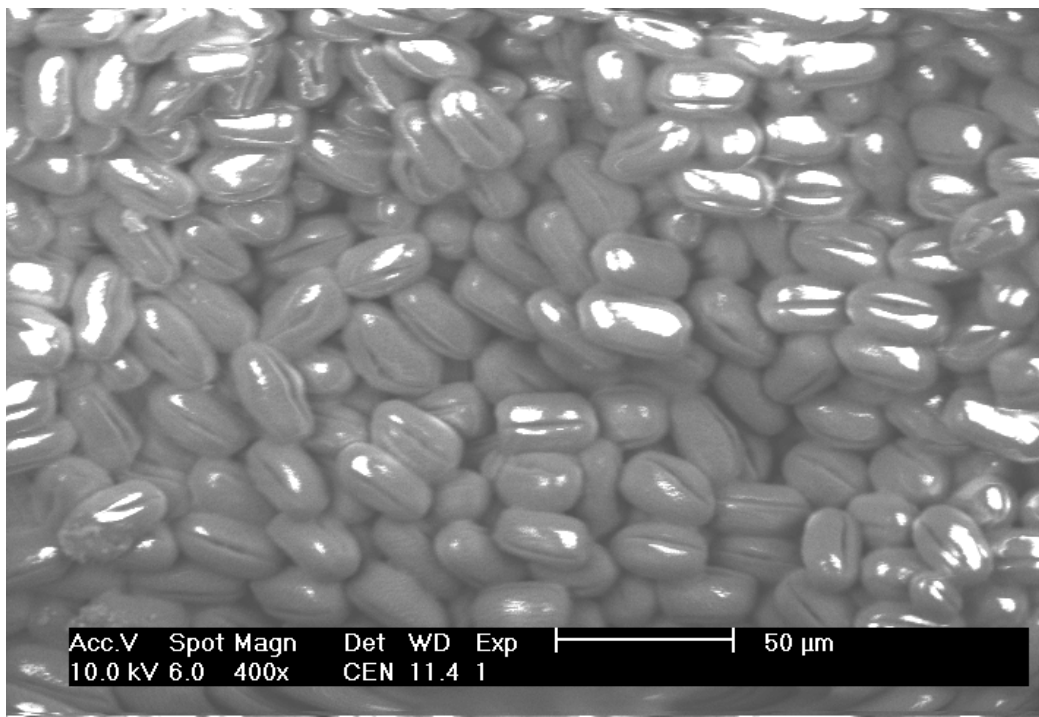
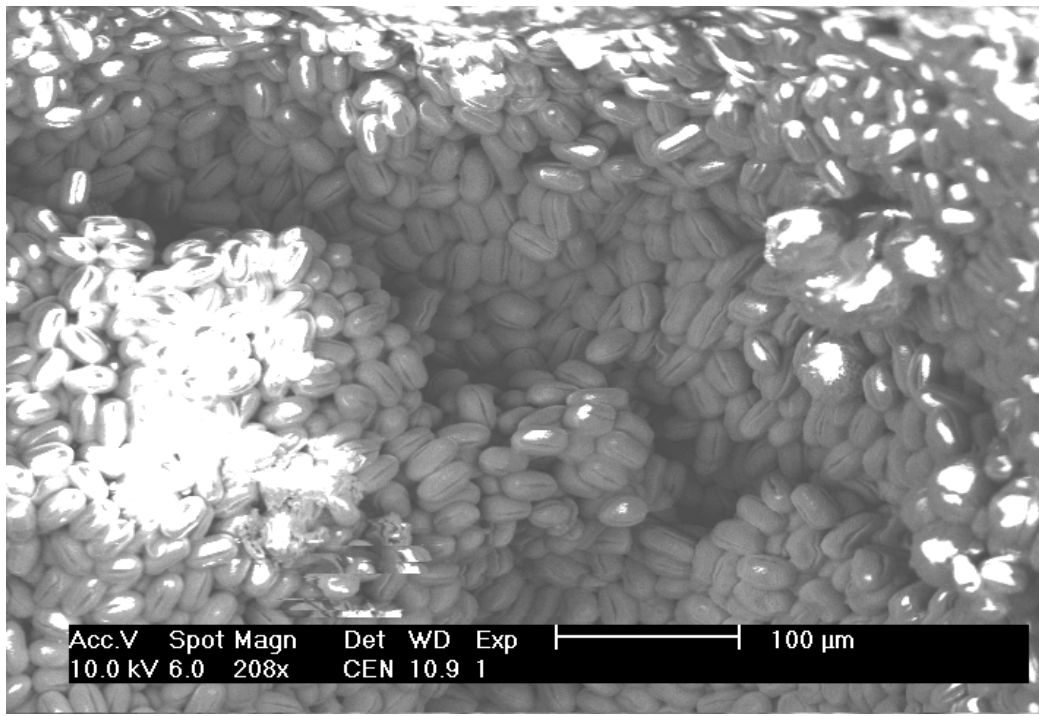


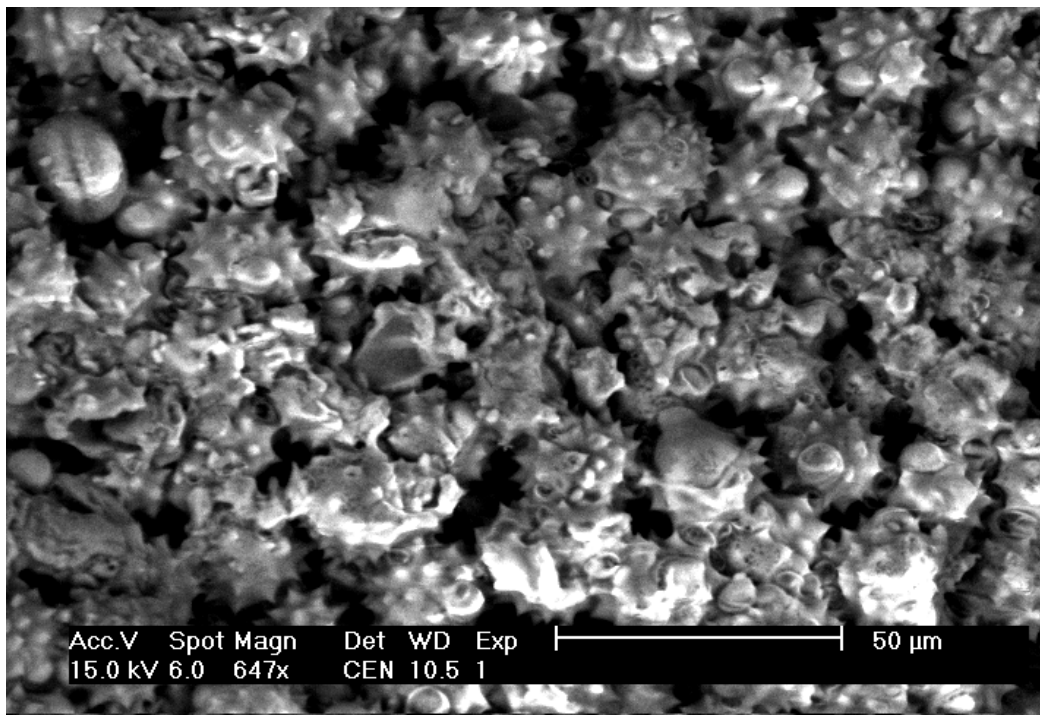
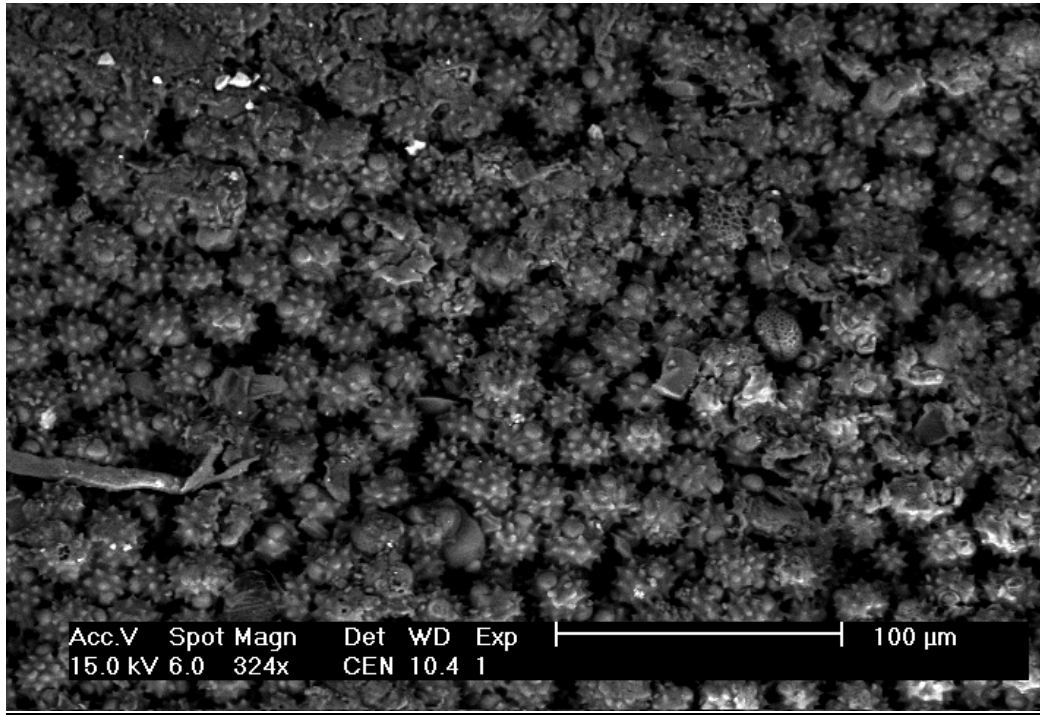


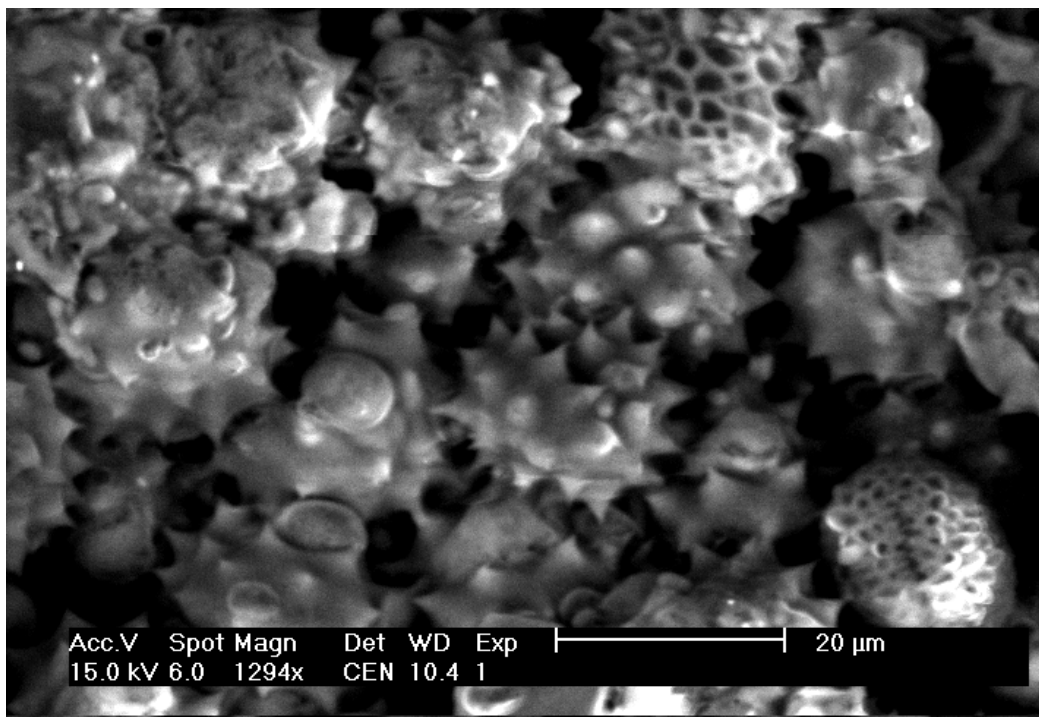
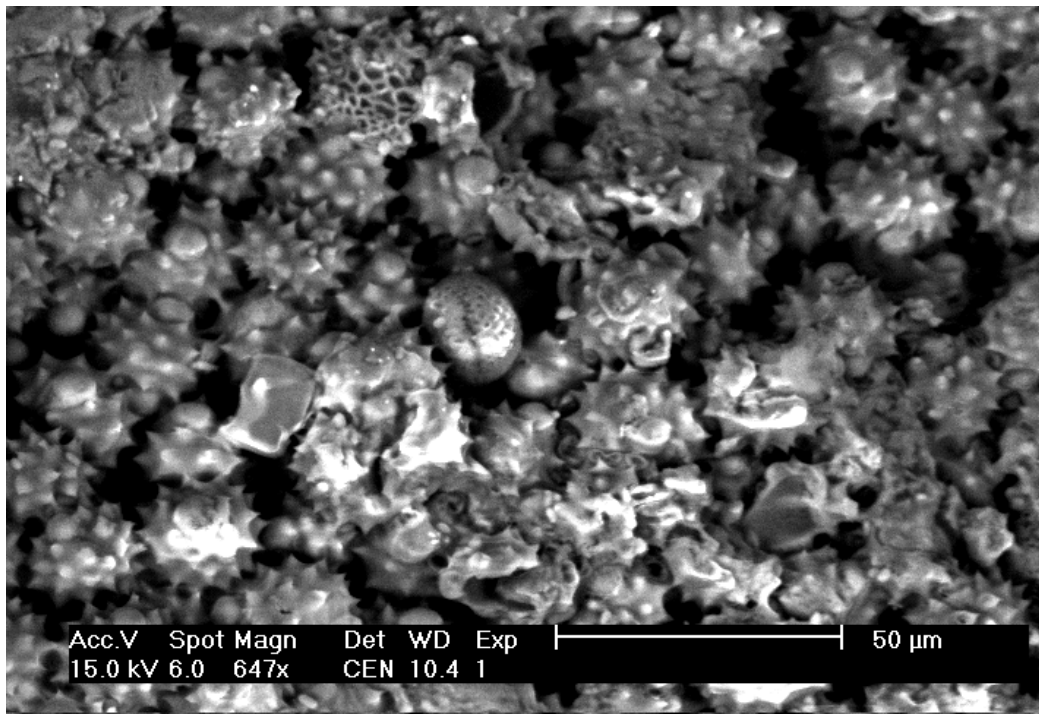












Hive Debris

The hive debris consists of wax, particularly the flake like structures and large lumps of propolis. The rest is likely to be: bits of bees, muck from cleaning out cells (Larval skins, faecal matter, spoilt brood food), and often chalk brood fruiting bodies.

Possible pollen identifications.

Alyssum saxatile (yellow flowers, rockeries, baskets – “baskets of gold”)

Geranium pyrenaicum (Hedgerow cranes-bill)

Hedera helix (Common and hybrid Ivy)

Cirsium vulgare (Thistle family)

Cardamine pratensis (Cuckoo flowers/Ladies smock)

Pulicaria dysenterica (Species of Fleabane in the daisy family)

Ononis repens? (Common Restharrow is a plant species of the genus Ononis)

Salix sp. (willow family – catkins)

Rubus sp.(bramble/blackberry blossom)

Tanacetum family (Tansy is a perennial, herbaceous flowering plant)

Chamaenerion angustifolium (Rosebay willowherb)